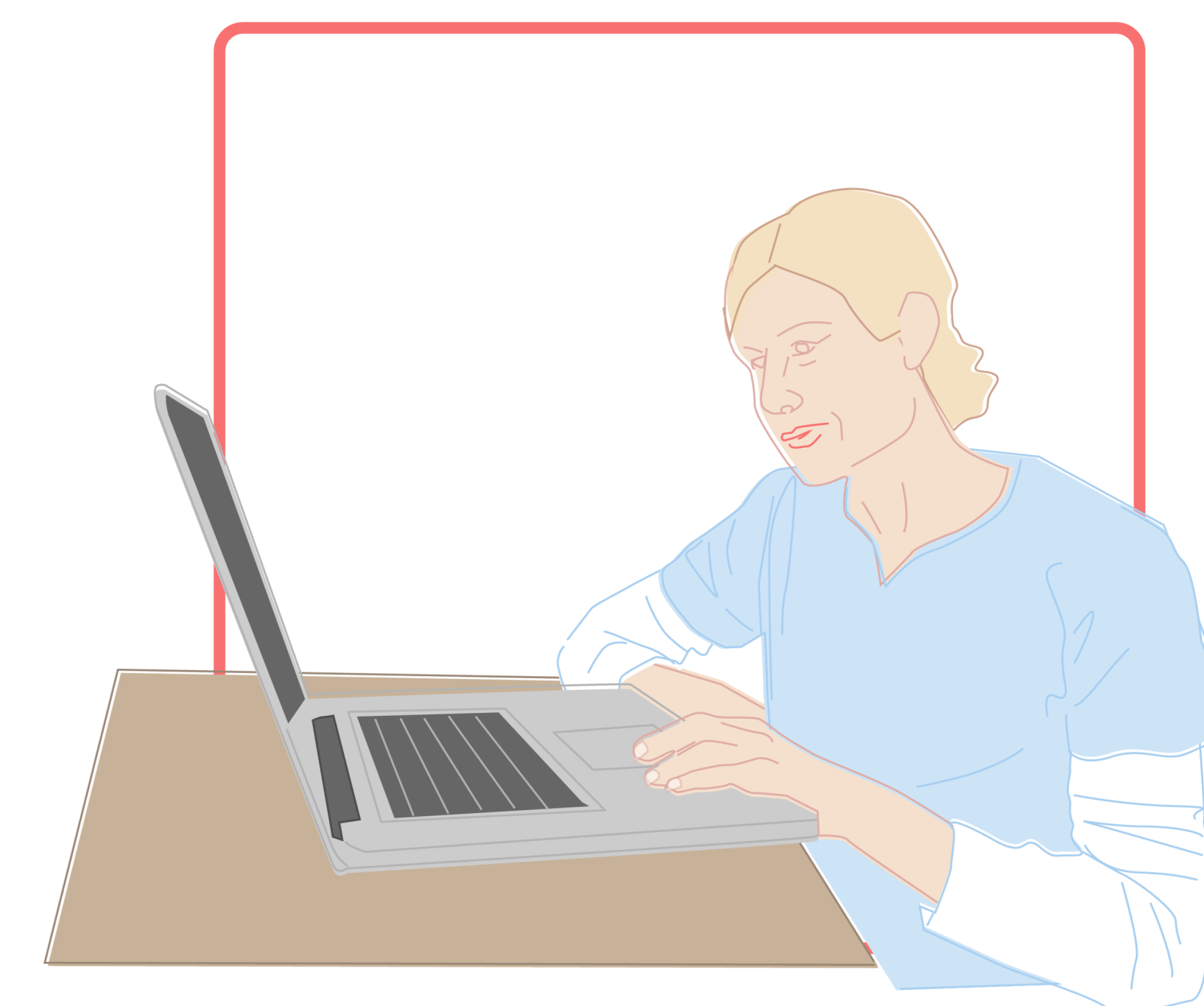


A Simple Guide to Comprehensive Assessments



Assessments provide important information to help nurses and staff deliver high-quality care; however, assessments are also required by state and federal regulations. The time and frequency of assessments can vary by state, but there are four general circumstances which require them: prior to admission to ensure the resident's needs can be met, at the time of admission to the facility, when there is a significant change in their condition or care needs, and in routine intervals per the facility's operating license (i.e. 90 days, semi-annually, etc.).²

Assisted living providers must conduct comprehensive assessments, both for the health of their residents as well as their operations. These assessments include a head-to-toe evaluation of each resident's physical and mental condition, as well as evaluations of their activities of daily living (i.e. bathing, dressing, grooming, handling finances, communication, chores, etc.). With a more complete understanding of the resident's health and capabilities, a care plan can be created specific to a resident's unique needs for nurses and staff to provide the required assistance and monitoring for the resident. As Medicare experts explain, assessments should be informative of what services are needed to achieve the health goals of the resident.¹

Assessments are very important for a resident's health and a community's compliance status. Without the right help from innovative technology, they can be very time-consuming.

Assessments are also foundational to establishing the care plan. Once the care plan is established from the assessment, it informs the care team of everything they must know and do to care for the resident. By performing thorough and timely assessments, not only are providers maintaining compliance standards, but they are also ensuring their residents receive the appropriate care.

Conducting accurate and complete assessments is never an easy task for the care team. Most assisted living clinical staff report that assessments can be time-consuming, especially during the current staffing shortages. With the hundreds of individual checks that have to be completed, many are concerned that they are missing necessary items. When there is no efficient process for conducting comprehensive assessments, both the resident and the facility's operations suffer.

To help alleviate the clutter and annoyance of paper assessments, many providers are turning to electronic solutions. Nurses have reported they welcome the integration of technology into their daily caregiving, as it can lead to improved efficiency, time-savings, and better care delivery.³ Care providers must shift to technology that empowers their staff to complete assessments quicker with a higher-level of accuracy. With the increasing challenges that are complicating every staff member's daily job, there is greater risk of missing a change in a resident's condition or failing a compliance survey.

RTasks Assessments: **Improved Care Quality and Delivery**

With the assessments feature integrated in the RTasks platform, care providers have all the tools and workflows they need to conduct comprehensive assessments. For every part of the care model, RTasks has an assessment designed to improve staff efficiency and ensure no resident is overlooked. Assisted Living communities can ensure the best quality of care, streamline their assessment duties, and ensure compliance with regulations.

Create Better and Informed Care Plans

One of the powerful features of RTasks Assessments is the ability to easily generate Care Plans, sometimes referred to as “Master Care Plans.” With these care plans, nurses and staff will gain a complete view of each resident’s status based on the needs identified through RTasks Assessments.

RTasks creates these informed Care Plans that outline the specific actions and interventions which are required to address each resident’s needs effectively. These plans are not static; rather, they can be customized based on the outcomes of the assessments and the evolving condition of residents.

Once generated from the assessments feature, the Care Plans seamlessly integrate into the user interface of RTasks, appearing prominently on the Today screen for quick and easy access. This ensures that care providers are consistently aware of the needs of each resident, allowing for timely and targeted interventions. As regulations may vary from state to state, the platform is designed to accommodate the flexibility required for regular reviews of the Care Plans, potentially multiple times per year, in accordance with state and federal guidelines.

Reduce Missed Resident Services

During assessments, nurses and staff often find that residents require changes in the services being provided. Some residents will require less care, while others may need additional services due to recent changes in their health. Regardless of whether they need more or less care, nurses need easier, more robust ways to document and manage changes in resident services. RTasks Assessments combines both of these features into one solution.

During assessments, nurses and staff often find that residents require changes in the services being provided. Some residents will require less care, while others may need additional services due to recent changes in their health. Regardless of whether they need more or less care, nurses need easier, more robust ways to document and manage changes in resident services. RTasks Assessments combines both of these features into one solution.



Enhance Staff Communication

It is important for every care team to communicate quickly and completely about the needs of every resident. During busy shifts and rapidly evolving care demands, it is difficult to share any changes in resident services with every staff member. RTasks helps to enhance communication no matter the challenge.

The comprehensive assessment feature allows providers to input notes about each service item of a resident's care plan. RTasks even tracks the date and time of when these notes were added or edited, with the complete history available to view. This makes communication available 24/7, as any team member can simply review the care plan whenever they need to. Instead of trying to find the paper assessment or ask the nurse who conducted it, any staff member can have all their questions answered with ease. This helps them deliver faster, better informed care.



Save Valuable Time

With the staff shortages and increased care demands, it's important for communities to save their staff time in every way possible. Like every other RTasks feature, the assessment is designed to help save time while also improving the quality of care.

Once an initial assessment is completed, all the information is saved on the RTasks platform. When it is time to conduct the next assessment, nurses can easily open a new assessment that will contain the previously entered information. The ongoing documentation requires nurses to update only what has changed. Simple. Fast. RTasks.

Maintain Simple Compliance

Assessments are vital for care, but they also play a large role in survey compliance. RTasks makes it simple for assessments to be documented and accessed at any time for government regulators to review. Any assessment can be generated into a report that contains key information, such as the type of assessment, date/time, resident data, and a copy of the Care Plan. Maintain compliance with ease using RTasks Assessments.

Empower Your Care Team with RTasks Assessments

Because of RTasks, it's never been easier for care teams to conduct comprehensive assessments for every resident in their community. By creating better care plans and reducing the number of missed services, RTasks Assessments helps improve the lives of each resident. Administrators worry less about compliance errors and are relieved about how their staff save valuable time.

Contact the team at ResiDex today and start empowering your care team with help from RTasks! Visit www.ResiDexSoftware.com or call 866.512.8369

Sources

- 1) What's an assessment in skilled nursing facilities? | Medicare. (2023). Medicare.gov. <https://www.medicare.gov/what-medicare-covers/what-part-a-covers/whats-an-assessment-in-skilled-nursing-facilities>
- 2) What's an assessment in skilled nursing facilities? | Medicare. (2023). Medicare.gov. <https://www.medicare.gov/what-medicare-covers/what-part-a-covers/whats-an-assessment-in-skilled-nursing-facilities>
- 3) Vuorinen, M. (2017). Registered Nurses' experiences with, and feelings and attitudes towards, the International Resident Assessment Instrument for Long-Term Care Facilities in New Zealand in 2017 - Minna Vuorinen, 2020. Journal of Research in Nursing. <https://journals.sagepub.com/doi/abs/10.1177/1744987119890651>